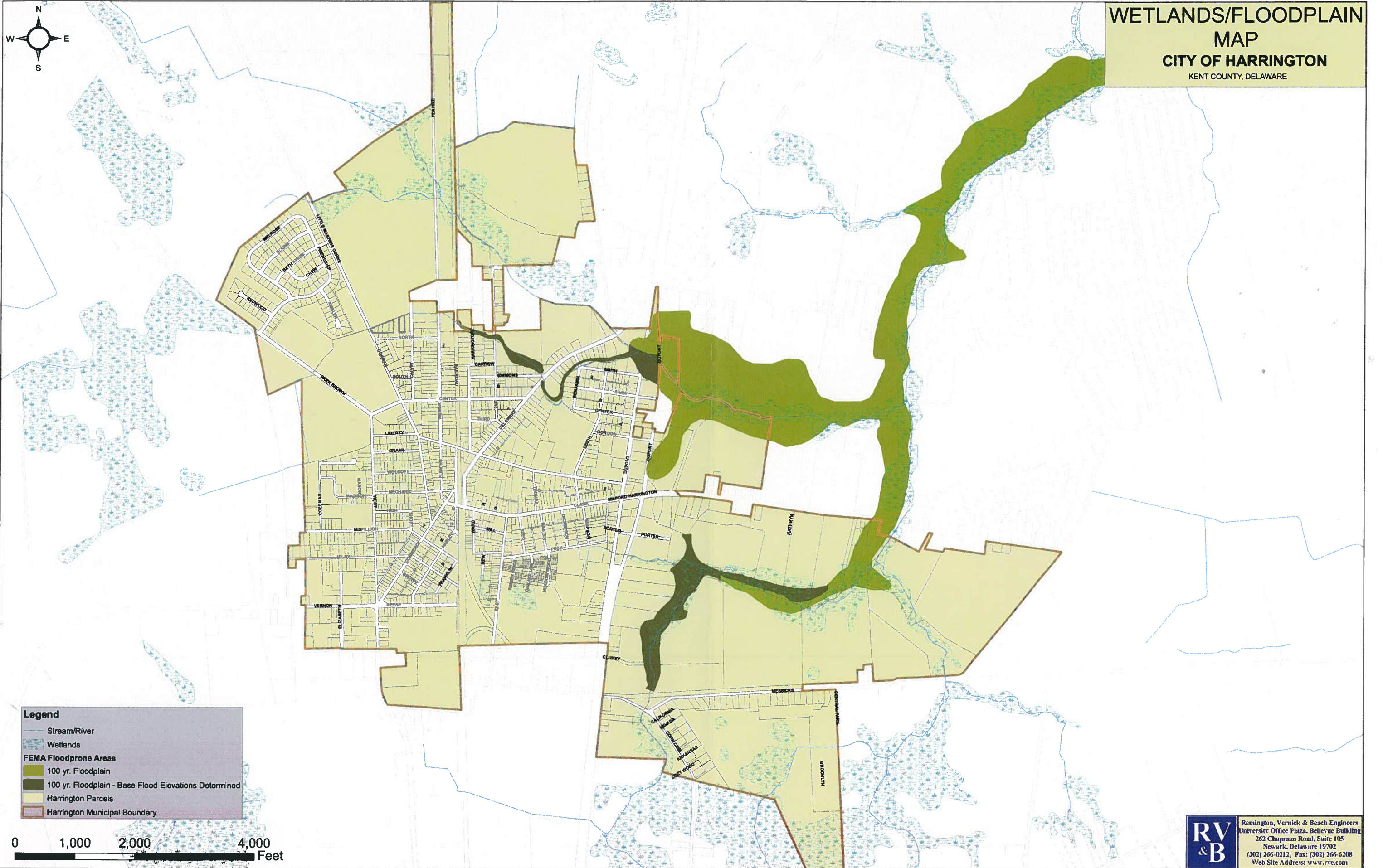
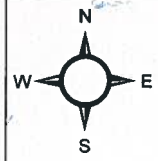


WETLANDS/FLOODPLAIN
MAP
CITY OF HARRINGTON
KENT COUNTY, DELAWARE



Legend

- Stream/River
- Wetlands
- FEMA Floodprone Areas**
- 100 yr. Floodplain
- 100 yr. Floodplain - Base Flood Elevations Determined
- Harrington Parcels
- Harrington Municipal Boundary



RV & B
Remington, Vernick & Beach Engineers
University Office Plaza, Bellevue Building
262 Chapman Road, Suite 105
Newark, Delaware 19702
(302) 266-0212, Fax: (302) 266-6208
Web Site Address: www.rve.com